

GENERAL DESCRIPTION

Quantity: _____

2 Level: ____ 3 Level: ____ 4 Level: ____

Mast, carriage & platform: All Structural steel and plate electric welded construction.

Load capacity: _____ lb uniform load.

Platform lifting speed: _____ fpm (fixed).

Platform lowering speed: 0 - 20 fpm (adjustable).

Drive system: Electrical/hydraulic using a _____ hp Tenv motor operated at _____ volts, _____ phase & _____ hertz.
Motor is direct coupled to a hydraulic pump.

Electrical: Adjustable upper & lower travel limit switches wired to a control panel.
All pushbutton stations and electromechanical slide bolt interlocks to be supplied, installed & wired by _____.
All controls to operate on a 24 volt circuit.
All electrical enclosures to be rated NEMA 1 or NEMA 12.

- Includes:
1. Maximum overtravel stops.
 2. Non-freeze falling platform brake assembly.
 3. Side platform deflection control.
 4. Overload hydraulic relief valve.
 5. Emergency platform lowering valve.
 6. Factory wiring & testing.
 7. Installation & operation instructions.
 8. Warranty of two (2) years, parts & labor when installed by AJAY.

Finish: Beige machinery enamel.

SAFETY REQUIREMENT:

Per ANSI code B20.1, this VRC requires enclosures and interlocked gate at each level.

PERSONNEL PROHIBITED:

This VRC is designed solely for the purpose of material movement and is not intended for personnel.

MAINTENANCE:

To extend the life of this VRC, periodic maintenance and safety inspections must be performed by qualified personnel as outlined in the operation instruction manual.

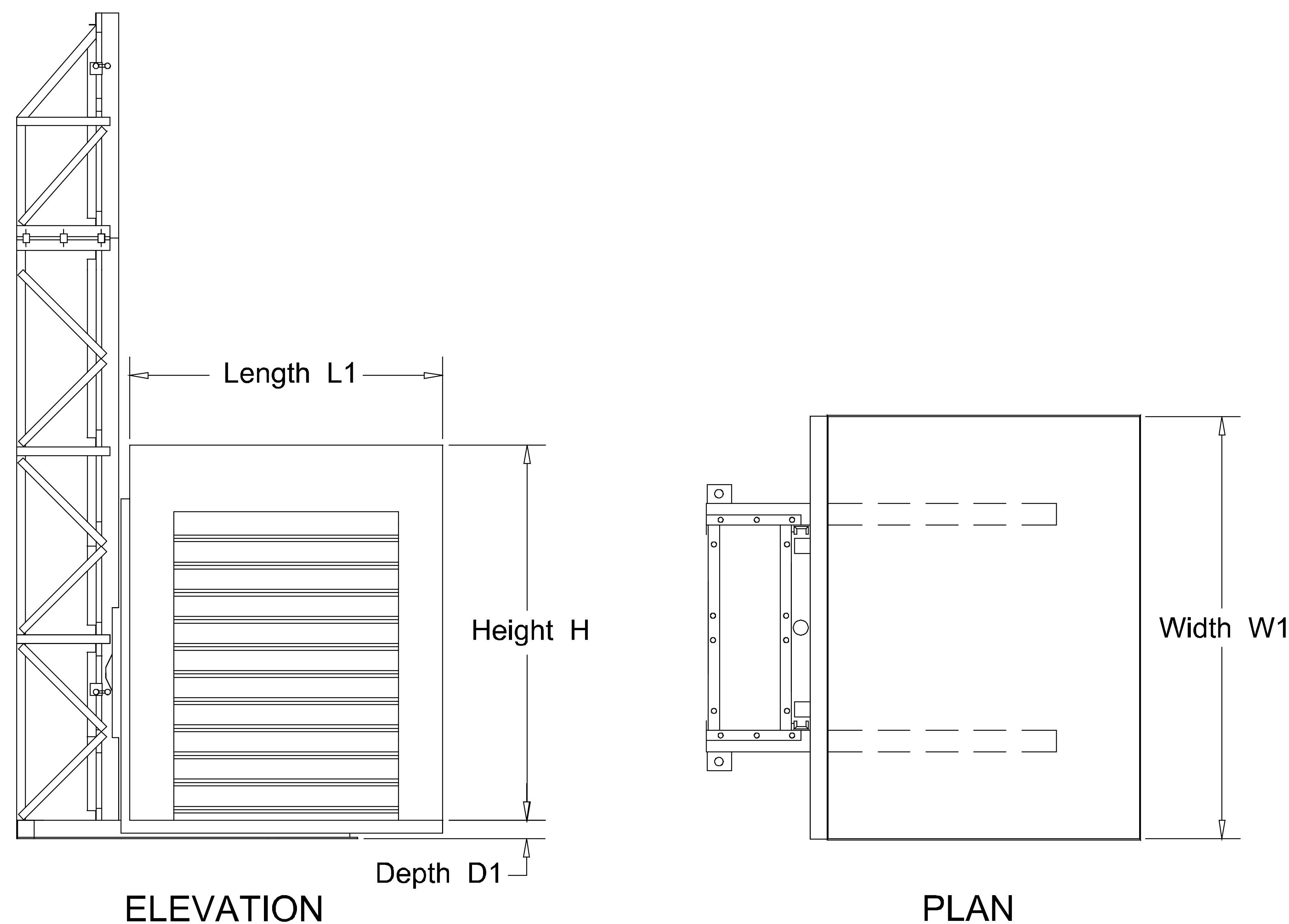


Table 1 -- Dimensions for VRC Carrier Platform and FRP Cab

Carrier Platform Dimensions	Carrier Platform Length L1	Carrier Platform Width W1	Carrier Platform Depth D1	FRP Cab Height H
6' x 6'	6'-0"	6'-0"	4.5"	8'-0"
6' x 7'	6'-0"	7'-0"	4.5"	8'-0"
6' x 8'	6'-0"	8'-0"	4.5"	8'-0"
6' x 9'	6'-0"	9'-0"	4.5"	8'-0"
Other: _____				

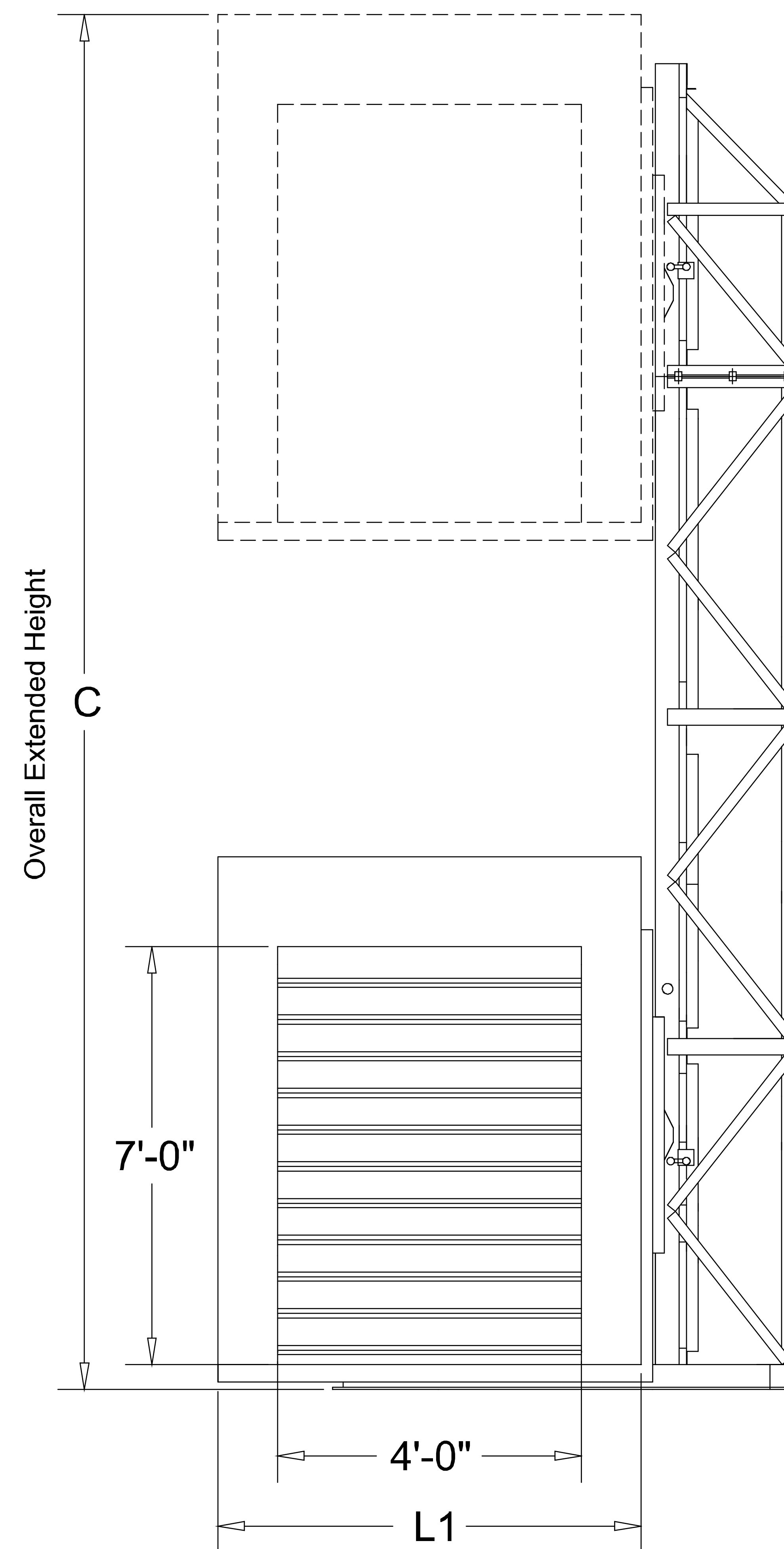
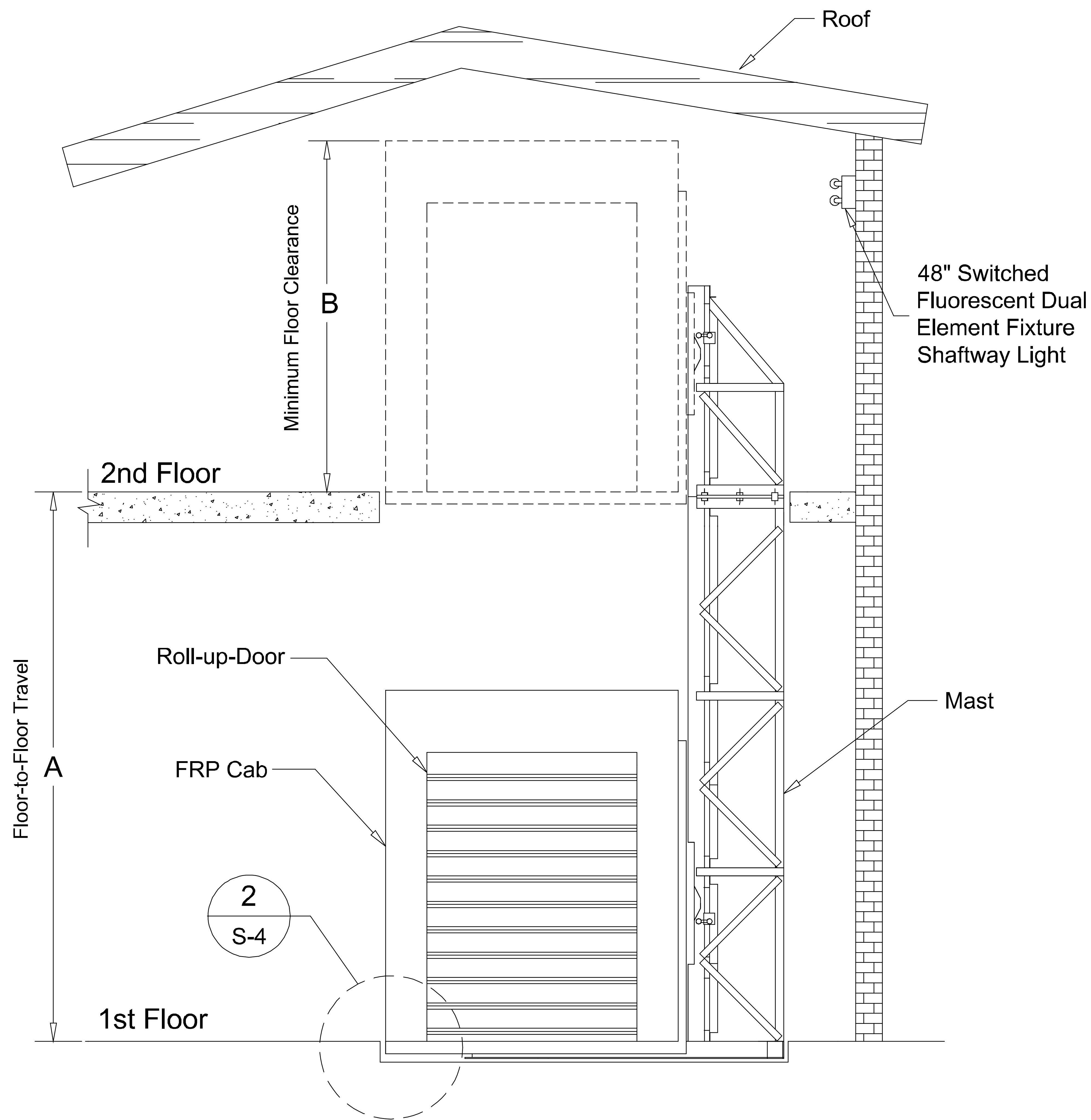
AJAY Equipment Corporation

13863 Redwood Ave. Chino, CA. 91710-6010
Phone: (800) 521-2529 Fax: (888) 521-2529

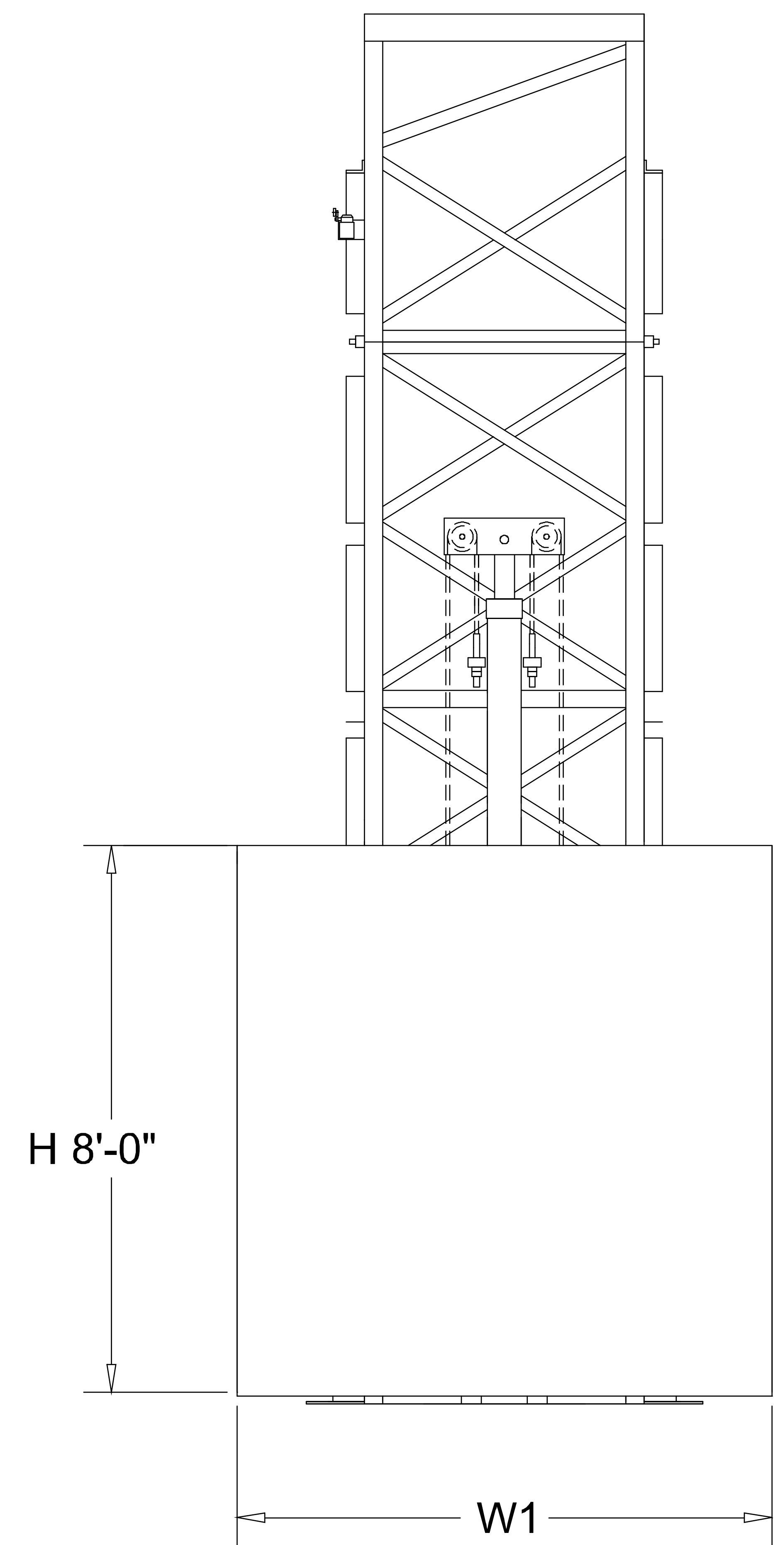
VERTICAL RECIPROCATING CONVEYOR (VRC)

Model AH-300S with FRP Cab Carrier Platform N.T.S. 3-23-05

S-1



SIDE VIEW 2 OR 3 LEVEL



FRONT VIEW

Note: Refer to Table 1 in S-1 for Car length L1, Car width W1 and Car height H.

A = Floor-to-Floor Travel = ___ft ___in
 B = 2nd Floor-to-Ceiling Height = ___ft ___in
 C = Overall Extended Height = ___ft ___in
 Roll-up-Door Color: _____

Notes:

1. There should be a 2" minimum clearance between the top of FRP cab and ceiling when VRC is fully extended.
2. Fluorescent fixture and switch to be installed and wired by building contractor.

AJAY Equipment Corporation

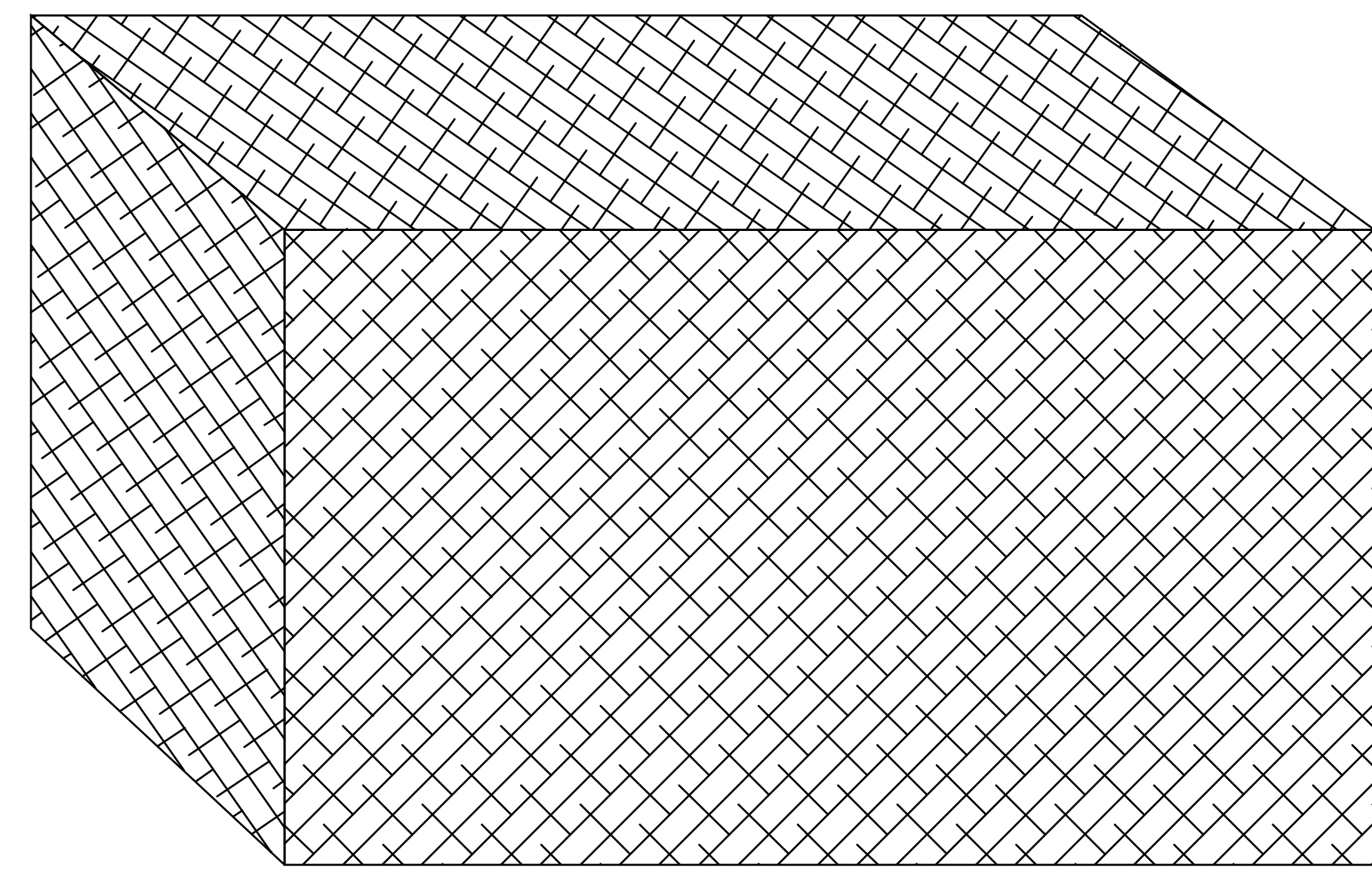
13863 Redwood Ave. Chino, CA. 91710-6010

Phone: (800) 521-2529 Fax: (888) 521-2529

VERTICAL RECIPROCATING CONVEYOR (VRC)

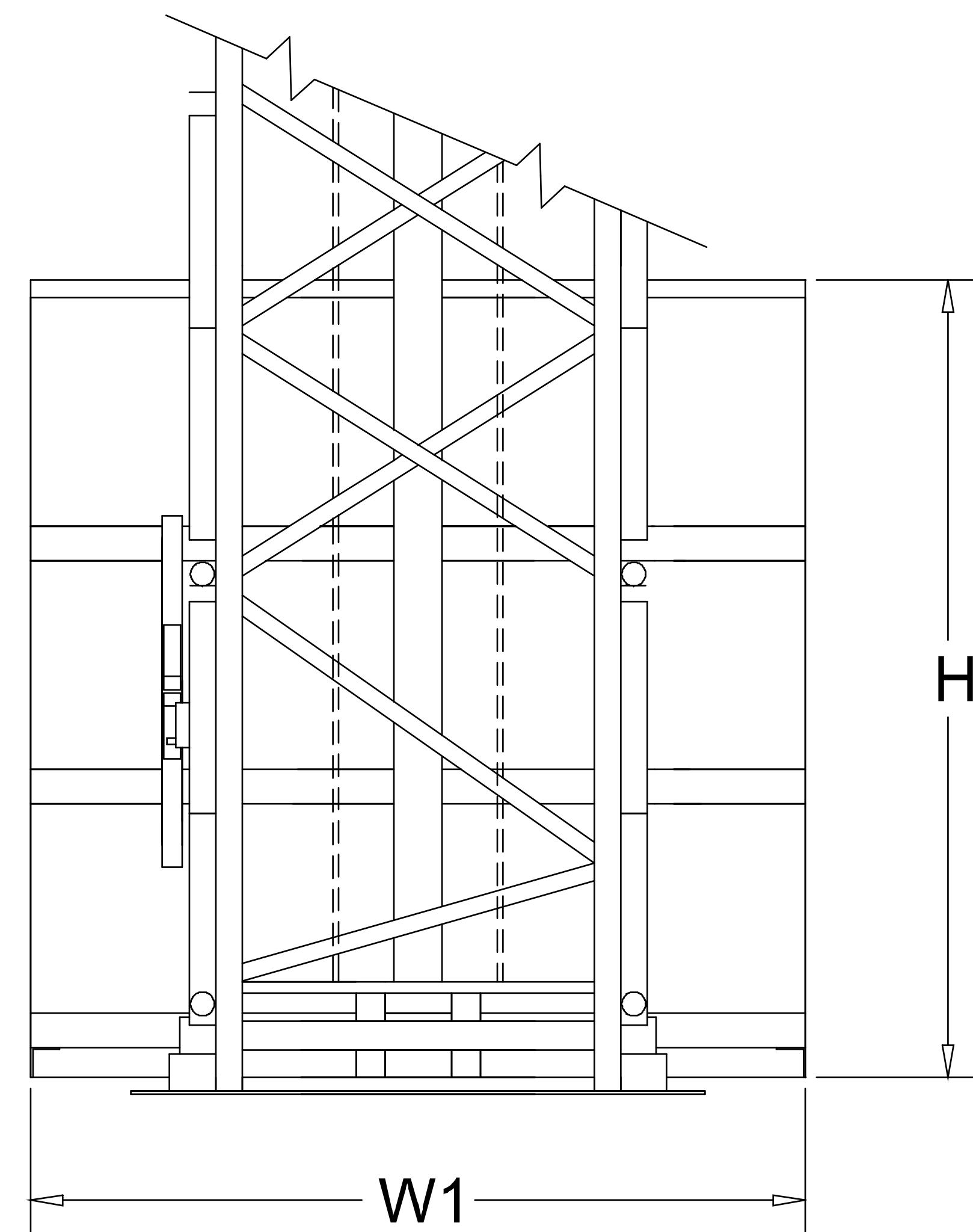
Model AH-300S with FRP Cab Carrier Platform N.T.S. 3-23-05

S-2

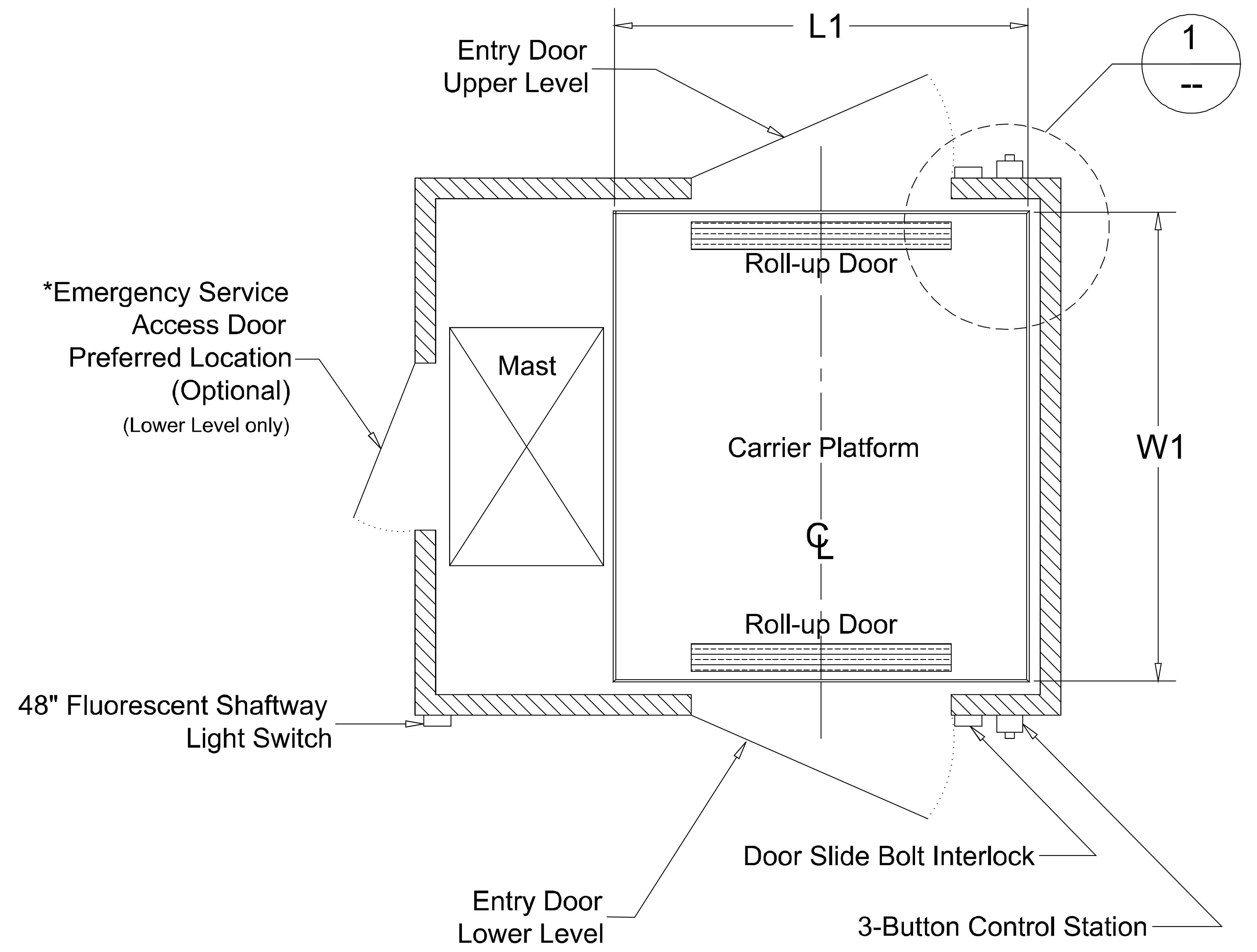


MOTOR CAGE COVER (OPTIONAL)

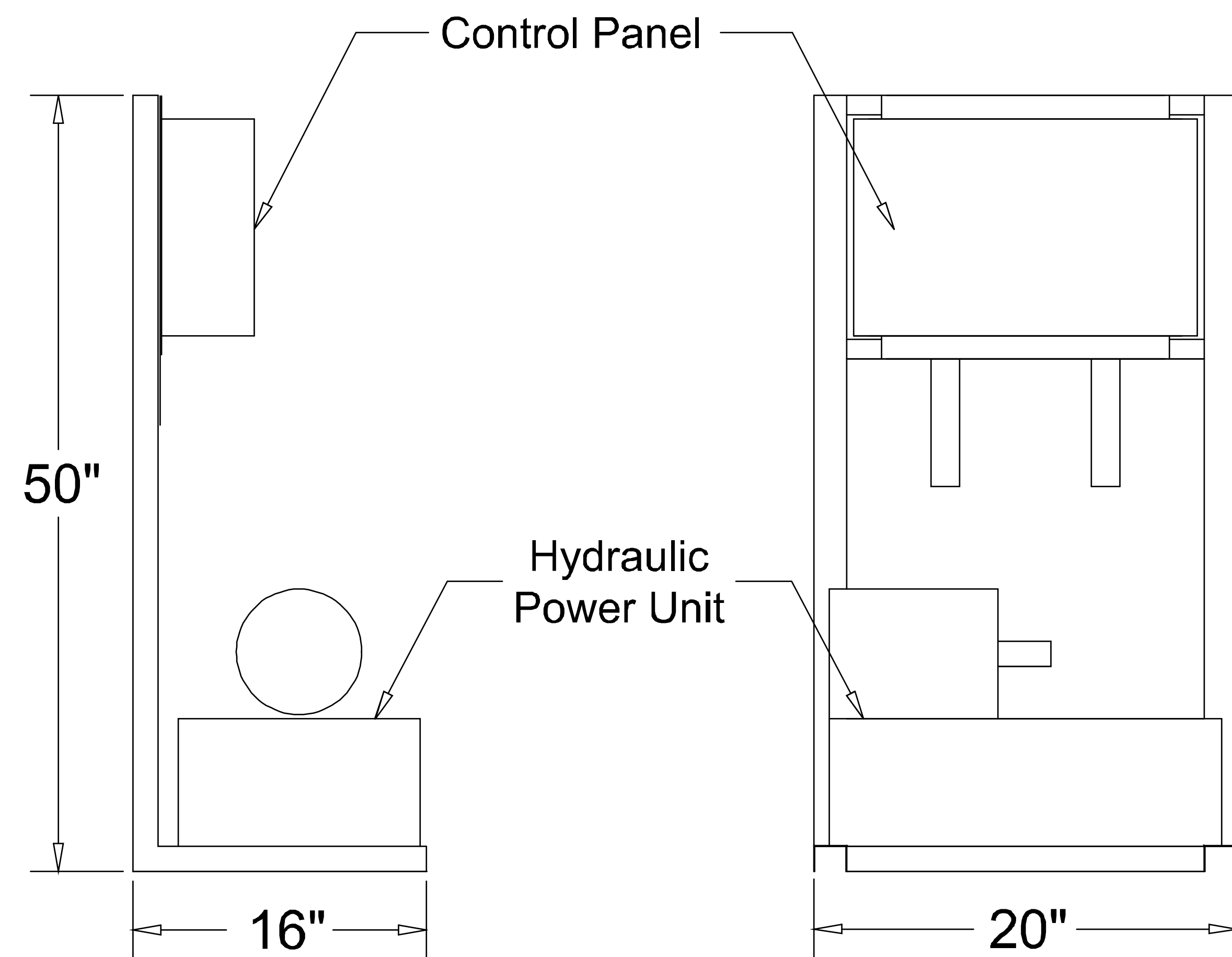
Not drawn to scale.



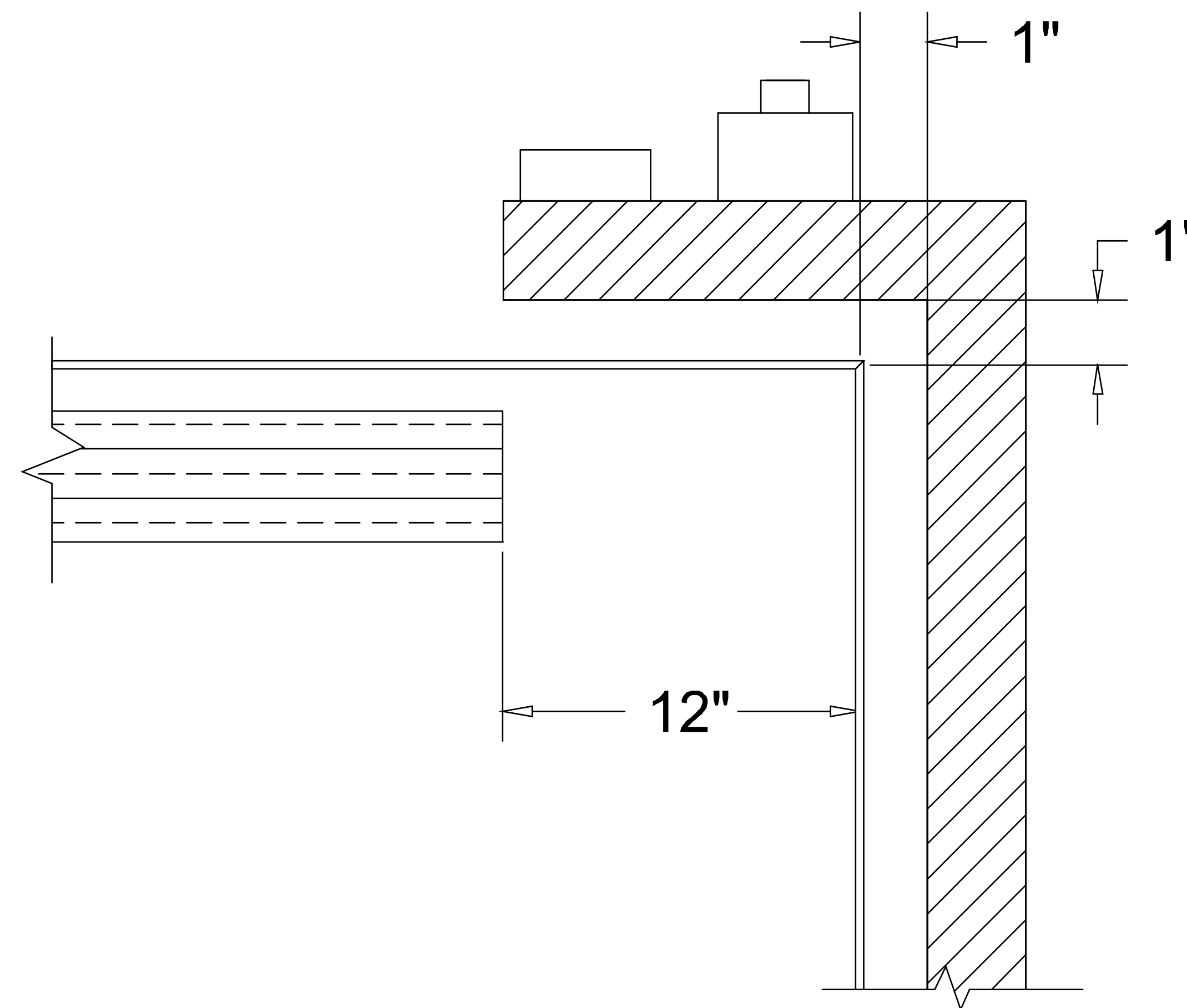
**REAR VIEW
WITHOUT POWER UNIT**



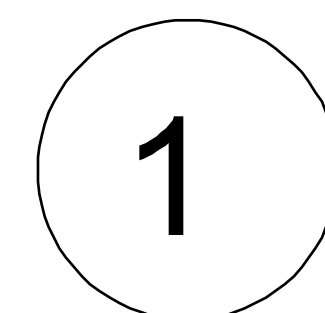
TOP VIEW OF CAB -- TYPICAL LAYOUT



EXTERNAL POWER UNIT



Note: 1" clearance required for all 3 sides closest to lift.



1. The hinged entry doors on each level must be centered to the lift carrier platform roll-up doors and not the wall opening.
2. Service door size is 2'-6" by 6'-8". Entry doors are 4'-0" by 7'-0".
3. Shaftway walls/partitions and entry doors are by others unless otherwise specified.

*Note: An equipment room or equipment room area is strongly recommended.

AJAY Equipment Corporation

13863 Redwood Ave. Chino, CA. 91710-6010

Phone: (800) 521-2529

Fax: (888) 521-2529

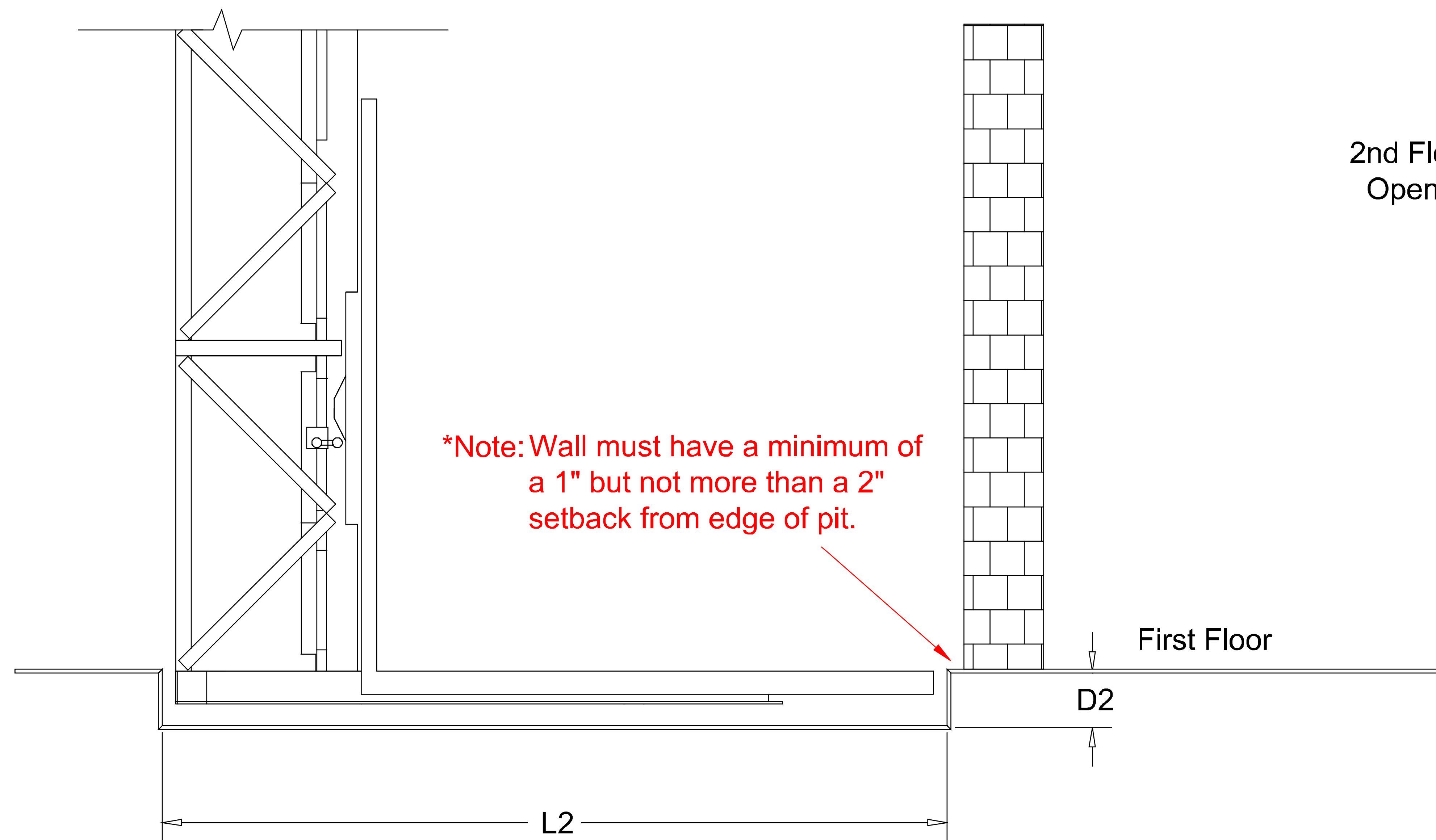
VERTICAL RECIPROCATING CONVEYOR (VRC)

Model AH-300S with FRP Cab Carrier Platform

N.T.S.

3-23-05

S-3



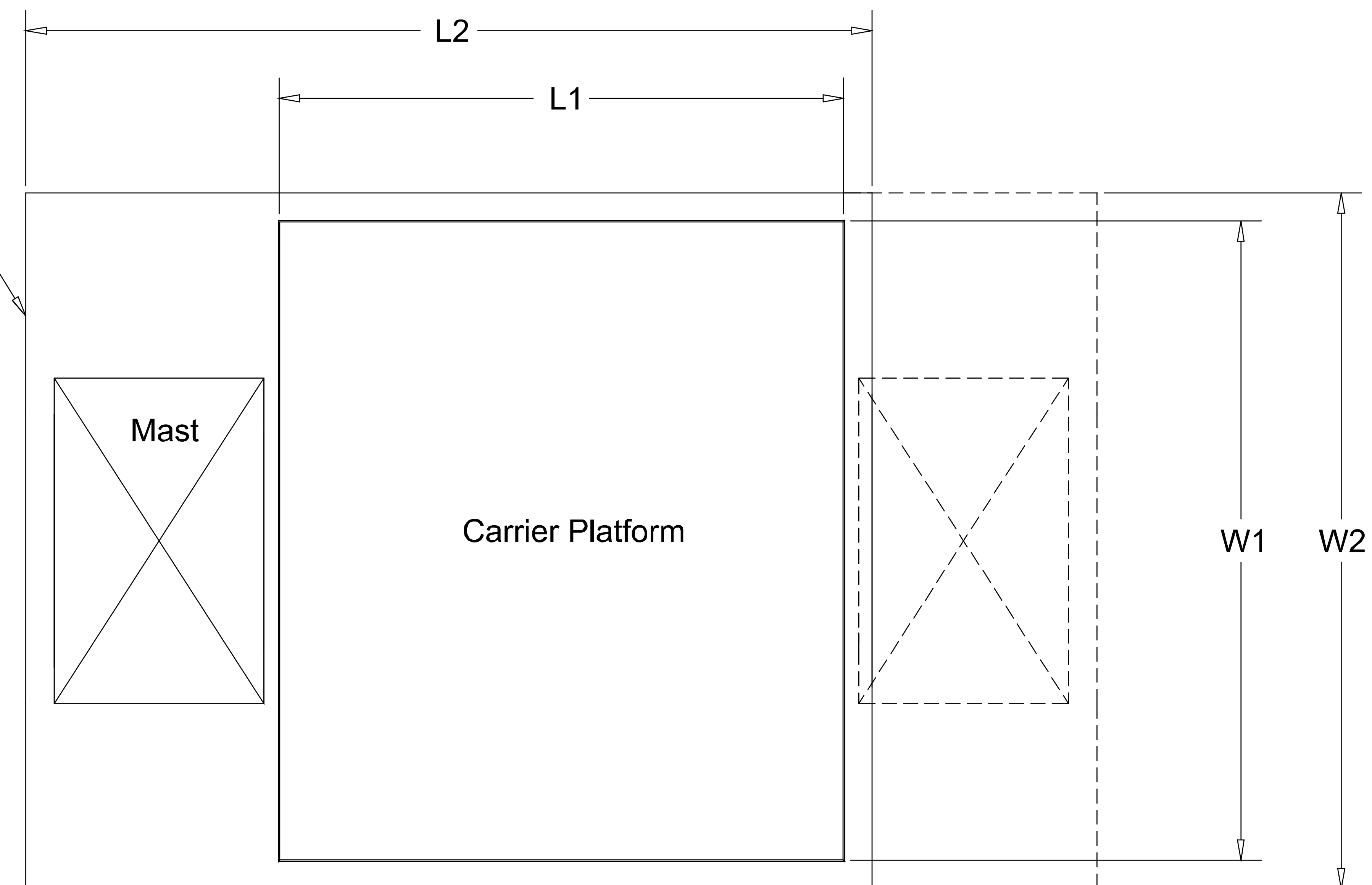
RECESSED SLAB DETAIL

1. Recessed slab dimensions: length L2, width W2", and depth D2.
2. Second floor opening length and width are same as above right (Detail 3).
3. Slab thickness should be 5" to 6" reinforced with #10 rebar or #4 rebar on 18" centers.

2

Table 2 -- Dimensions for Recessed Slab & 2nd Floor Opening

Carrier Platform Dimensions	Opening Length L2	Opening Width W2	Opening Depth D2
6' x 6'	9'-0"	6'-2"	5 1/2"
6' x 7'	9'-0"	7'-2"	5 1/2"
6' x 8'	9'-0"	8'-2"	5 1/2"
6' x 9'	9'-0"	9'-2"	5 1/2"
Other: _____			



TOP VIEW OF LIFT FROM SECOND FLOOR

Note: The mast could be placed on opposite side as shown by dotted lines.

3

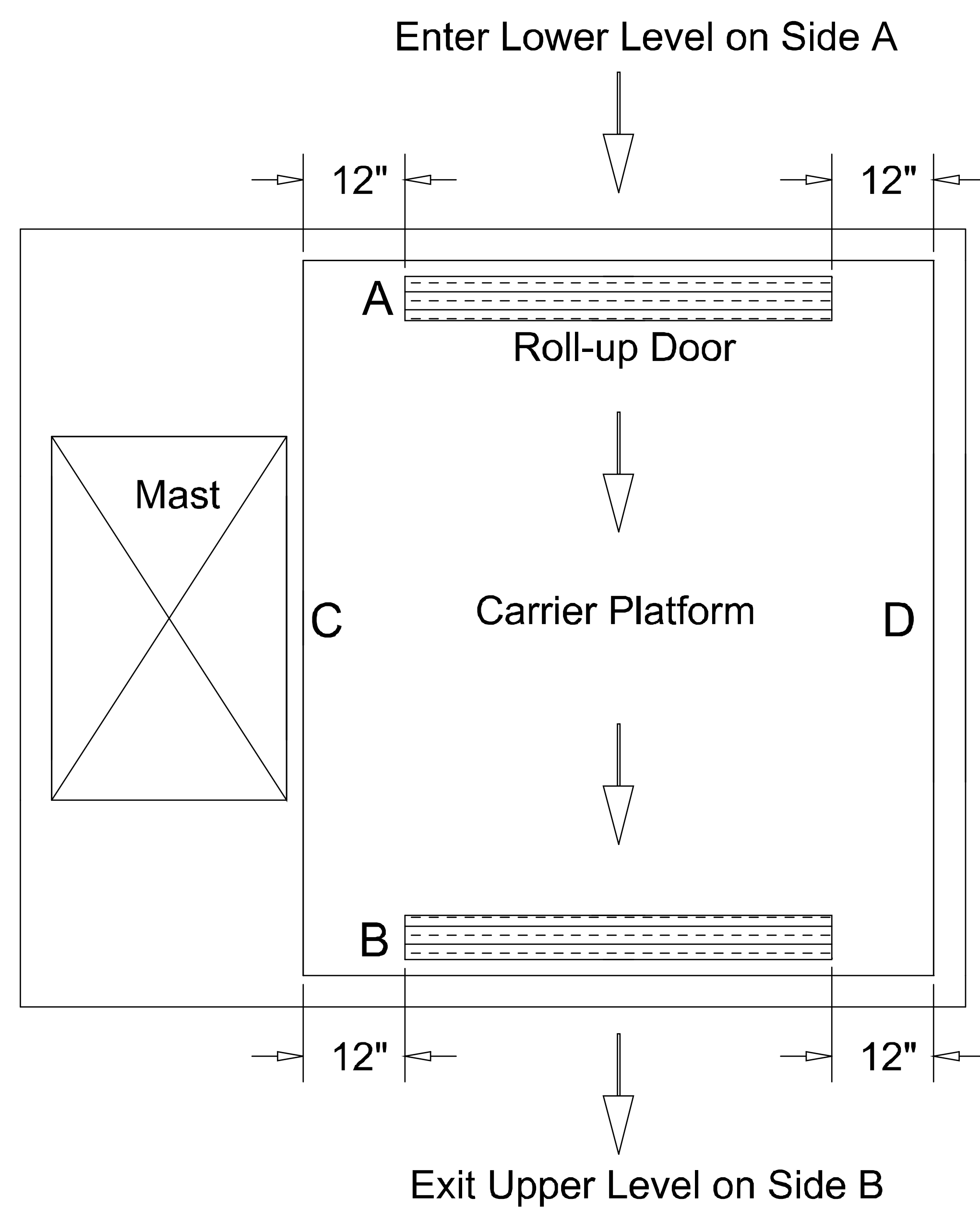
AJAY Equipment Corporation

13863 Redwood Ave. Chino, CA. 91710-6010
 Phone: (800) 521-2529 Fax: (888) 521-2529

VERTICAL RECIPROCATING CONVEYOR (VRC)

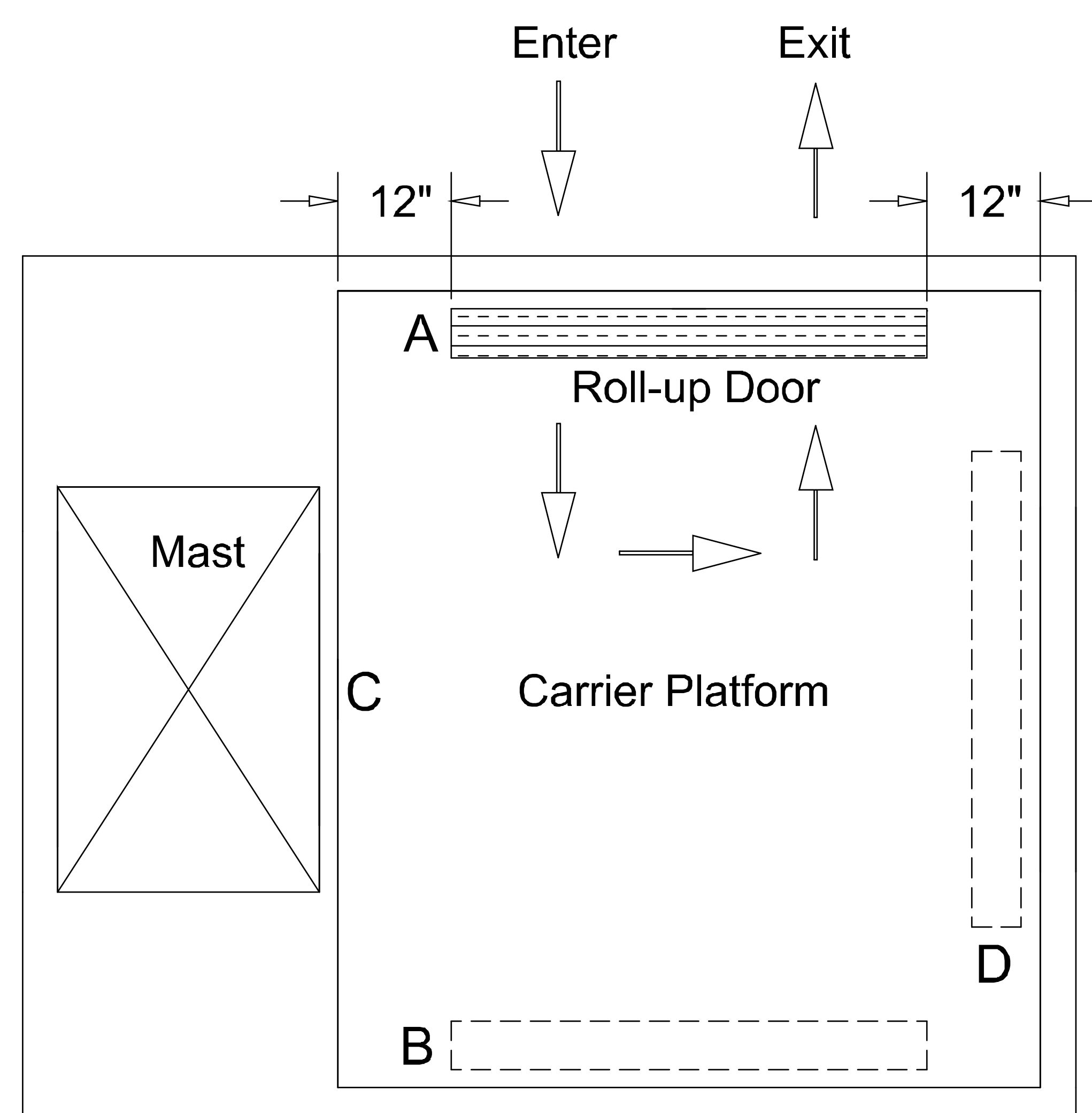
Model AH-300S with FRP Cab Carrier Platform N.T.S. 3-23-05

S-4



Z TRAFFIC PATTERN

Entry and exit are from opposite sides of platform.
The mast can be on either side C or D.



C TRAFFIC PATTERN

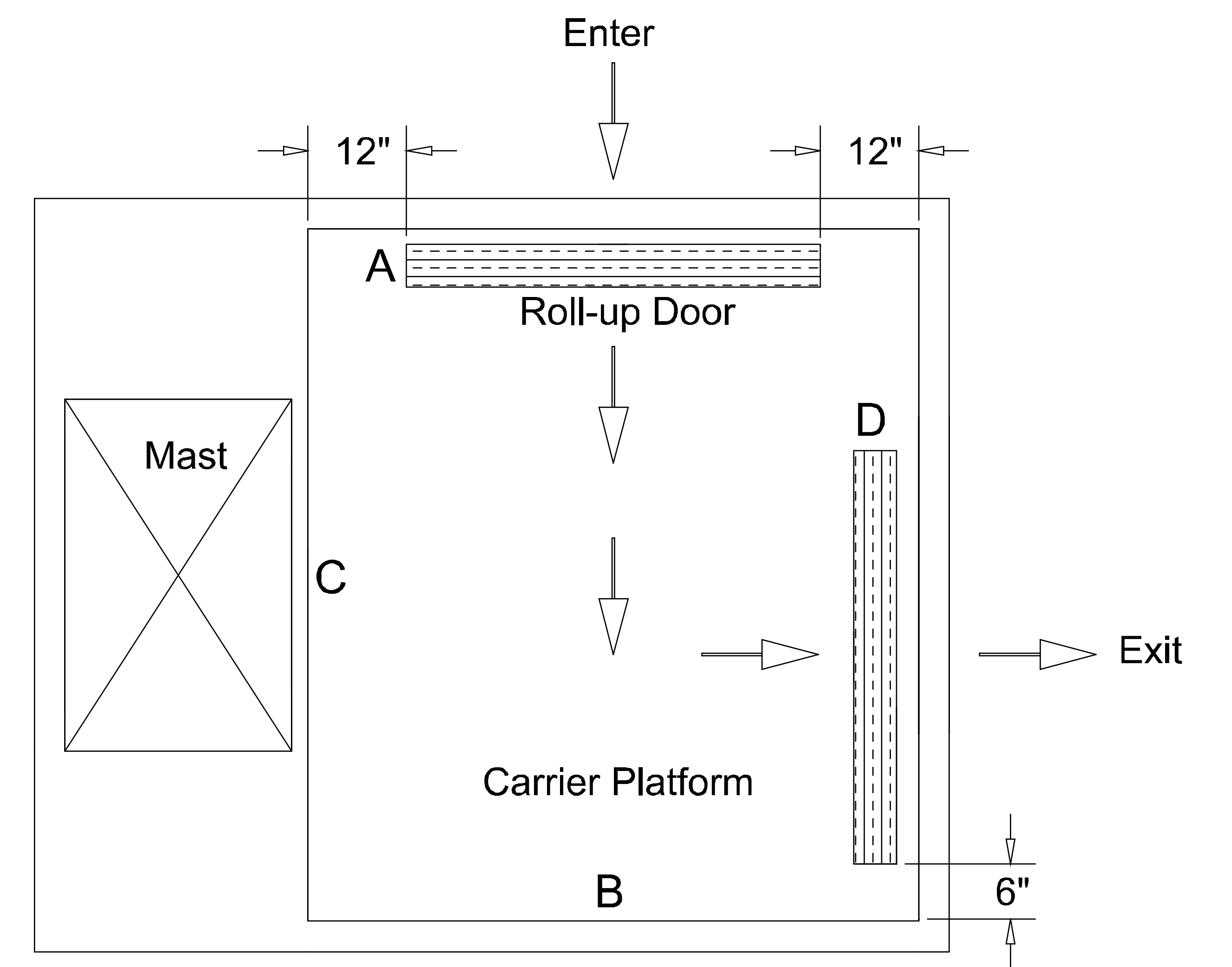
Entry and exit are from the same side each level.
The mast can be on side C with entry on side A, B or D.
When the mast is on side D, entry can be on side A, B or C.

RIGHT ANGLE (RA) TRAFFIC PATTERN

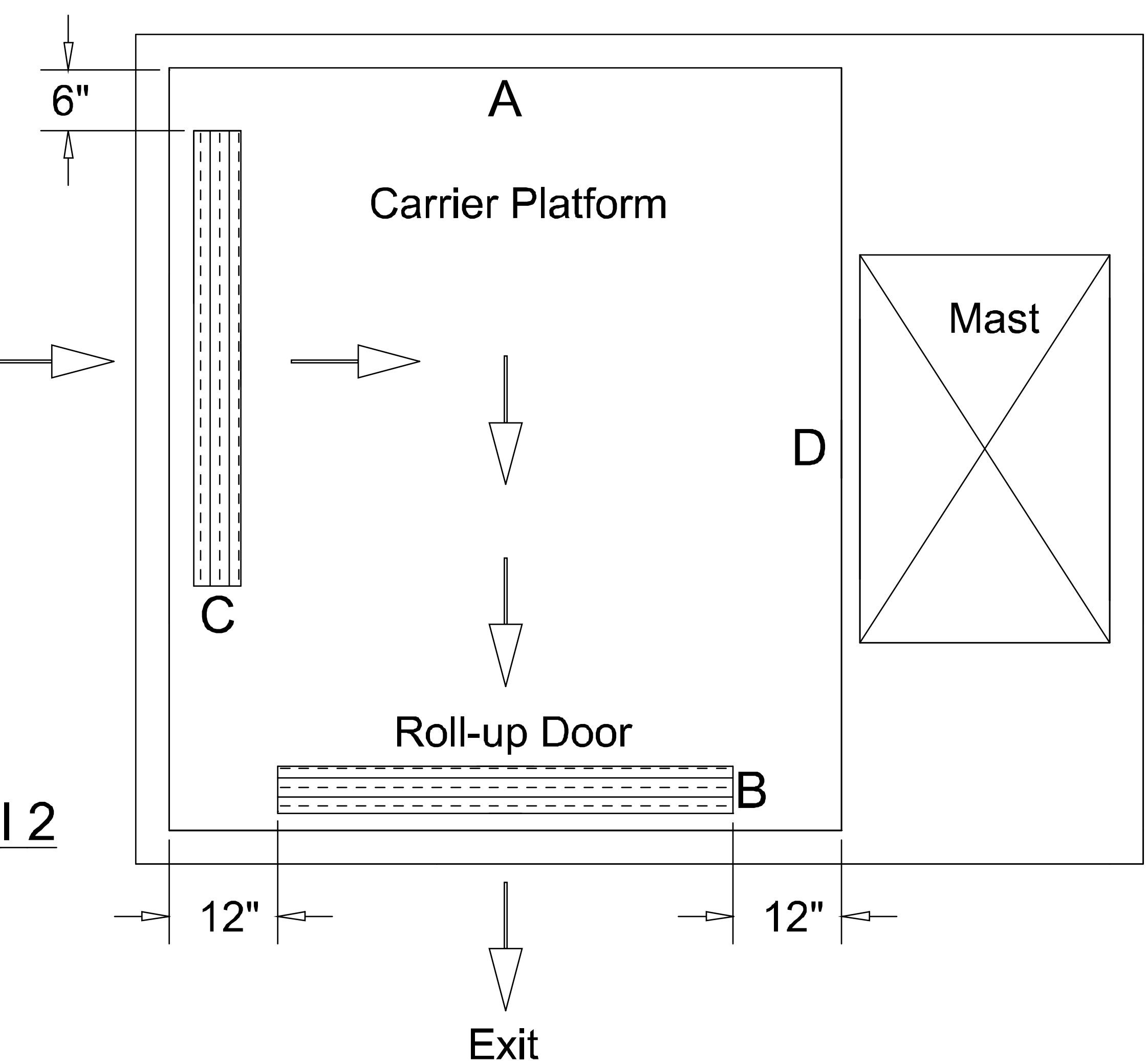
Entry and exit are at right angles. Two detail drawings as shown below are examples of how the traffic pattern can be laid out. The mast shown in detail 1 is on side C, allowing entry for lower level on side A, and exit for upper level on side D. When mast is on side D as shown in detail 2, entry for lower level is on side C, and exit for upper level is on side B.

Note: The reverse layout and traffic pattern of each example as shown below is also possible.

Detail 1



Detail 2



AJAY Equipment Corporation

13863 Redwood Ave. Chino, CA. 91710-6010

Phone: (800) 521-2529 Fax: (888) 521-2529

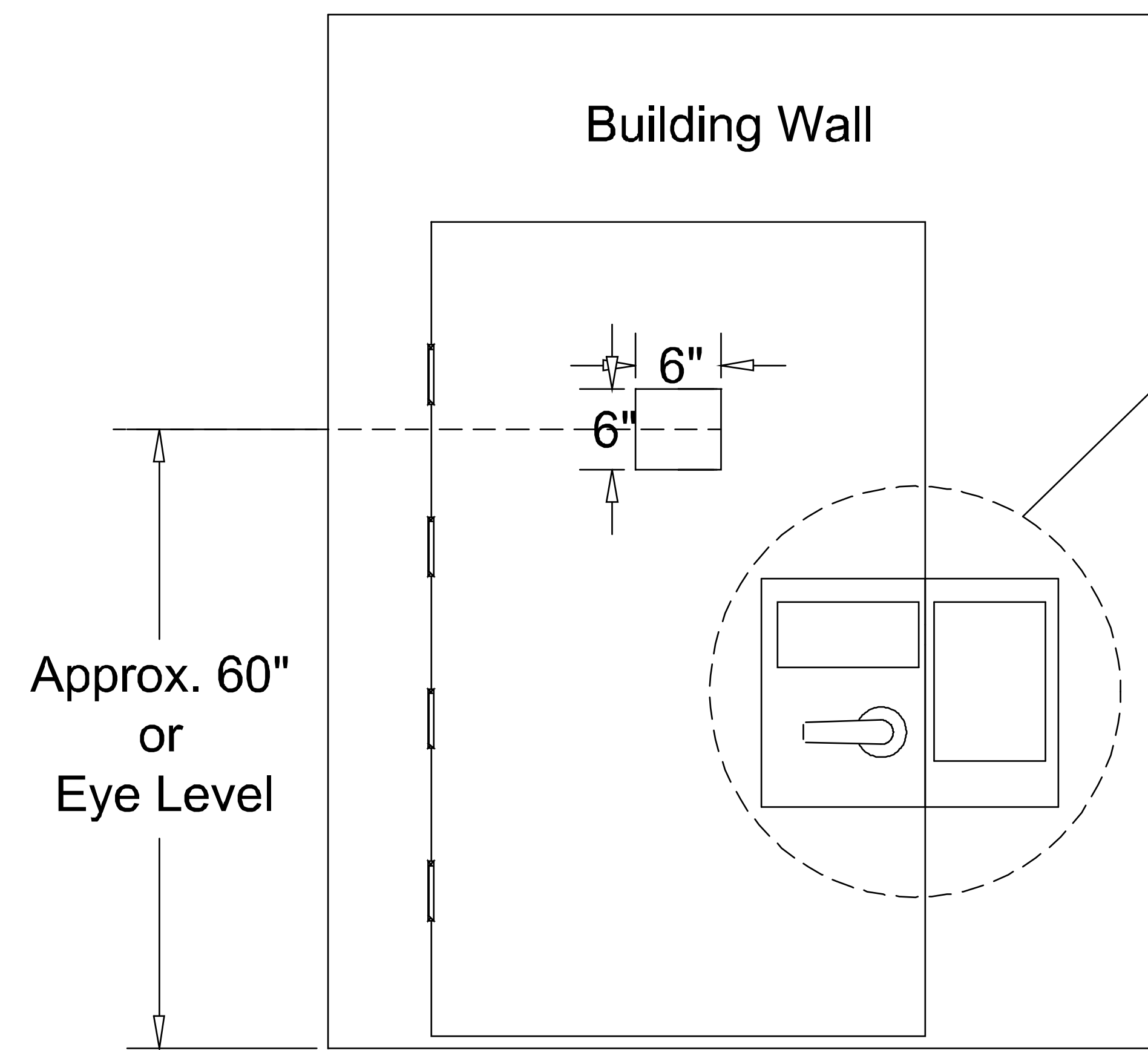
VERTICAL RECIPROCATING CONVEYOR (VRC)

Model AH-300S with FRP Cab Carrier Platform

N.T.S.

3-23-05

S-5

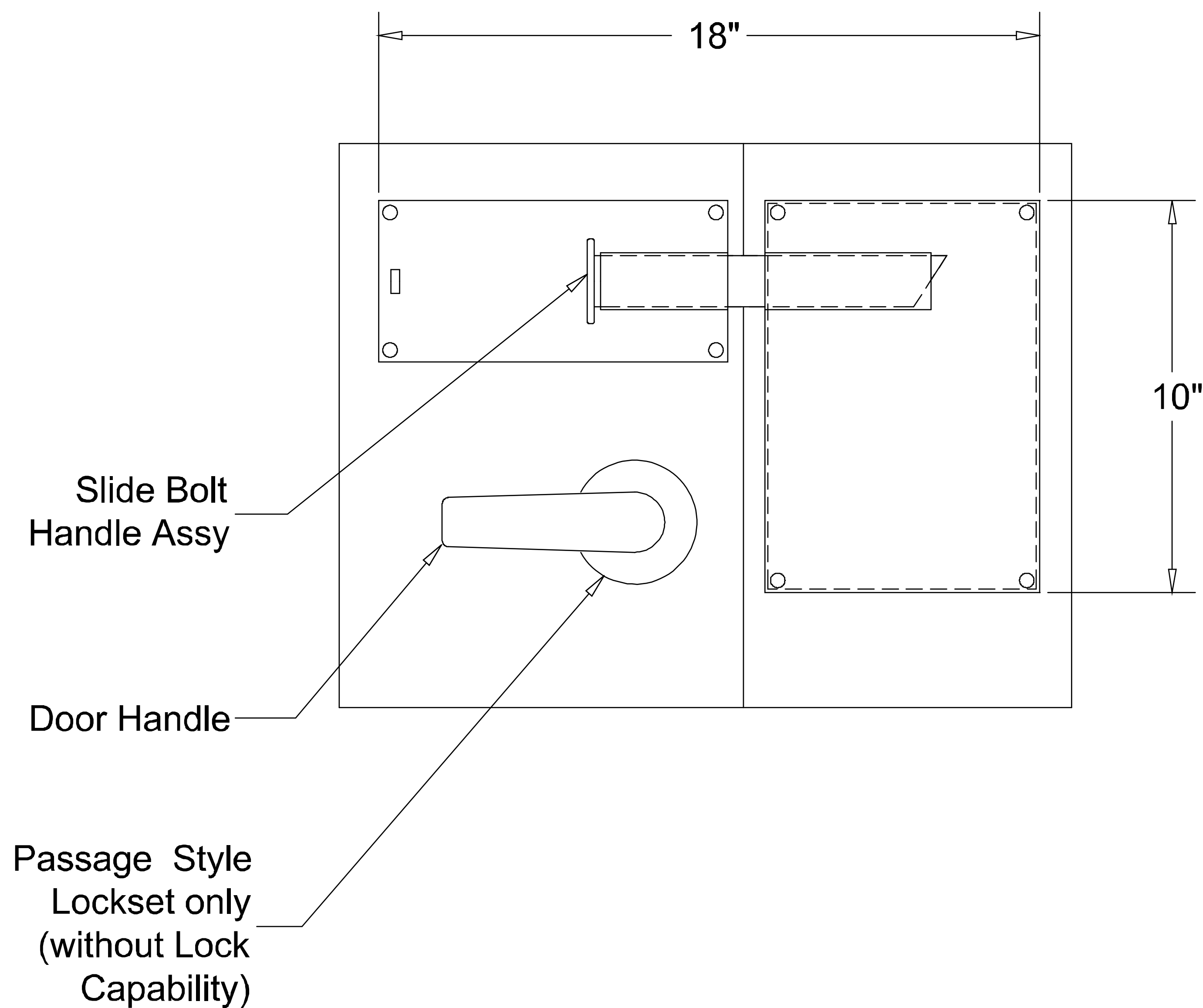


4
--

Note: A single hinged heavy-duty, self-closing metal entry door & frame size 4'-0" by 7'-0" is highly recommended for durability reasons and ease of use by the customer.

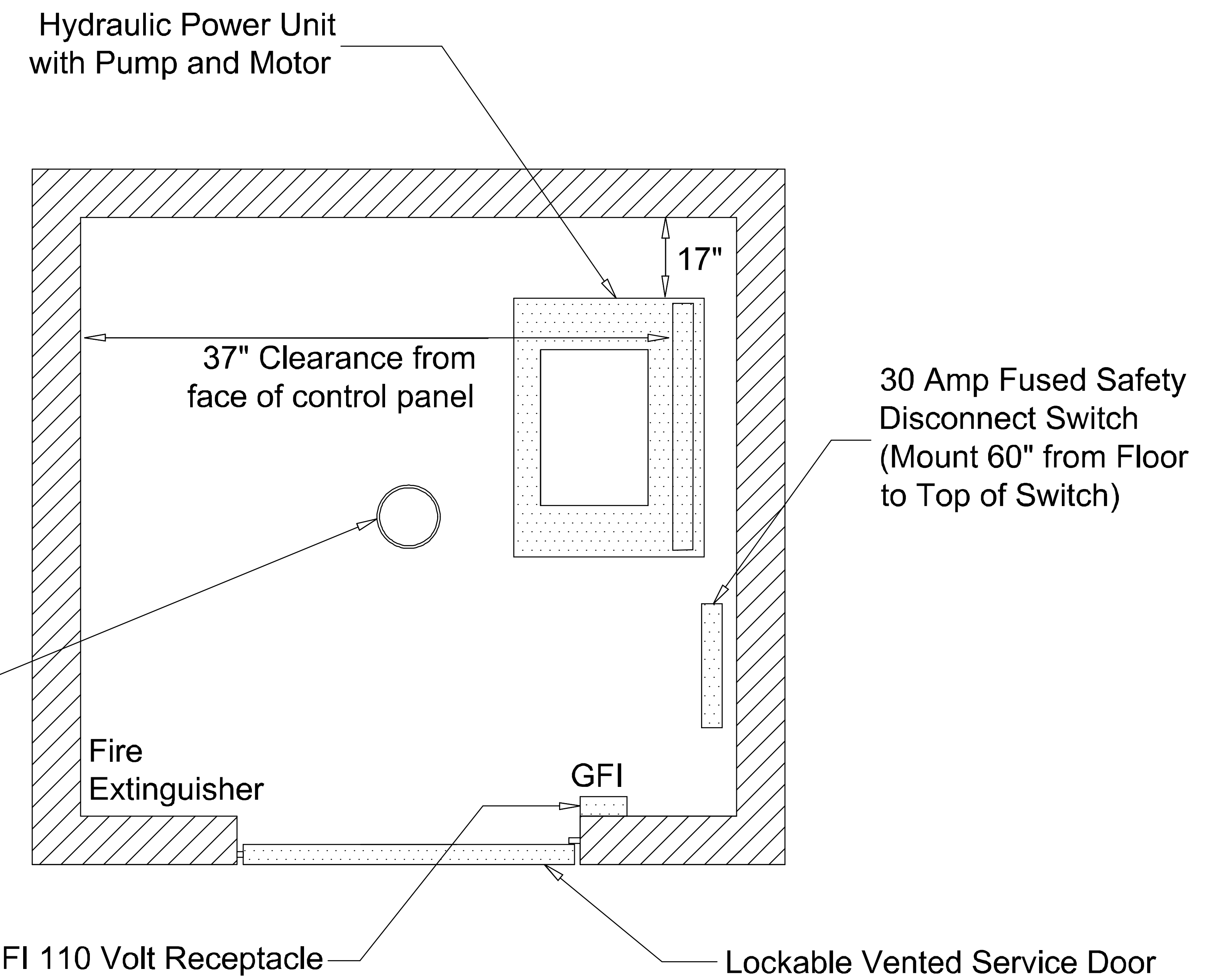
Door safety interlock switch can be used on either single hinged or bi-parting hinged entry doors.

SIDE VIEW OF DOOR AND SAFETY INTERLOCK



4-Way Safety solenoid mechanical slidebolt interlock assembly shown with mounting plates and without solenoid cover.

4



PLAN VIEW OF EQUIPMENT ROOM OR EQUIPMENT ROOM AREA

1. Should be located, if possible, on the side adjacent to the VRC mast.
2. Must have a fused safety disconnect switch, switched overhead light and GFI receptacle.
3. Should be approximately 20 - 25 square feet, with a 2'-6" x 6'-8" self-closing, self-locking vented service door.

***Note: An equipment room or equipment room area is strongly recommended.**

AJAY Equipment Corporation

13863 Redwood Ave. Chino, CA. 91710-6010

Phone: (800) 521-2529 Fax: (714) 792-0858

VERTICAL RECIPROCATING CONVEYOR (VRC)

Model AH-300S with FRP Cab Carrier Platform N.T.S. 3-23-05

S-6